

DME&JDE Smooth Rubber Hose Bend Restrictor

Smooth hose bend restrictor is a popular hose bend restrictor with cylindrical structure. It has straight types and flared end types. The flare end design has a beaded locking feature that provides a secure fit over the coupling and offers relief from strain. Either style prevents kinks in the hose line at the connection point saving wear and tear caused by the stress from twisting and bending. Moreover, the vinyl material sleeve make the grip easier when using the rubber hoses for cleaning and other operation.

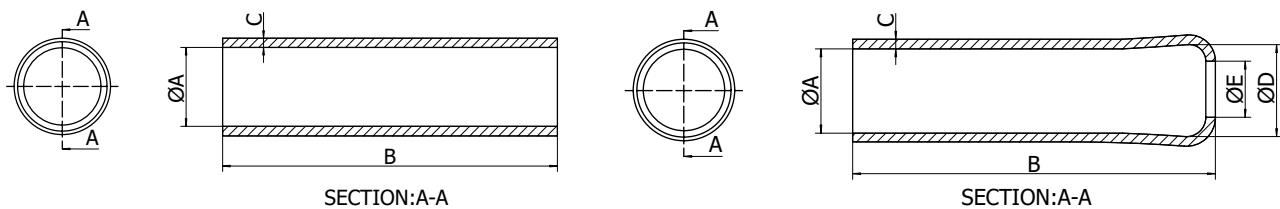
Features & benefits

- Good toughness
- Corrosion and aging resistance
- Good elasticity
- Large variety of color choices
- Wide range of sizes and customizable
- Customized logos are accepted



Specification

Hose Guards (hose bend restrictors) are available to fit the most popular sizes, but it also can be incorporated into a wide variety of custom grip designs.



Specification of Smooth Type Hose Bend Restrictors										
Series Number	Inside Diameter "A"		Inside Length "B"				Inside Diameter "D"		Opening Diameter "E"	
	(inch)	(mm)	Typical (inch)	Typical (mm)	Max. (inch)	Max. (mm)	(inch)	(mm)	(inch)	(mm)
0.75"	0.750	19.05	3.500	88.90	3.50	88.90	1.117	28.37	0.669	16.99
0.812"	0.812	20.62	3.500	88.90	5.00	127.00	1.140	28.96	0.650	16.51
0.890"-1	0.890	22.61	3.500	88.90	5.00	127.00	1.140	28.96	0.866	22.00
0.890"-2	0.890	22.61	3.500	88.90	5.00	127.00	1.140	28.96	0.689	17.50
0.952"-1	0.952	24.18	3.500	88.90	5.00	127.00	1.142	29.01	0.768	19.51
0.952"-2	0.952	24.18	3.500	88.90	5.00	127.00	1.142	29.01	0.875	22.23
1.125"	1.125	28.58	3.500	88.90	3.50	88.90	1.325	33.66	0.866	22.00
1.250"	1.252	31.80	3.500	88.90	3.50	88.90	1.437	36.50	1.024	26.01